



Resilience Teamwork Kindness Respect

Hello everyone,

I can't believe we are in Week 3 of the term already! The start of our term has been a bit topsy turvey with a lot of illness in our community and staff away. I want to thank our families for being understanding and following the protocols of keeping children home if unwell. Also, well done to our children for adapting to changes, getting down to business by continuing with their learning!

Mid-year Intake Transition

We are very excited to have 5 children start their school transition next Wednesday. We welcome Jack, Elle, Eddie, Elke and Maggie and their families. The children will be at school on Wednesday's until the end of lunch for weeks 4-6 and then have two full days in weeks 7 & 8. This is a wonderful opportunity for both the children and families to become more familiar with the school, routines, and learning. This is our first mid-year intake so we will be using this time to get to know the children as learners and to trial different structures to ensure when they start in term 3, we have structures in place for all R-2 students to thrive.

Governing Council

Our Governing Council met this week. Well done to Hannah and Jana for implementing aspects of the RELISH stack to ensure everyone has a sense of belonging and opportunity to contribute as well as improving the effectiveness of our meetings. I encourage parents and community members to talk with our Governing Council members to learn more about what is happening at our school. Fundraising and grant writing to improve our play-space including building a shed was discussed. If you can help out with fundraising please reach out to GC members.

RELISH

Interpersonal Connection is the RELISH stack we are currently learning about. Interpersonal Connection is the need to feel understood, supported and connected to others on a personal level. It is different to being social. It brings cognitive diversity in a team. It is important to highlight while we have committed time to the learning the next phase is the implementation. I encourage participants to please share your thoughts about how you would like Shelley's face to face time used. I also encourage participants to share with Lani any notes from each stack that can be used in school/community/families for implementation.

Site Improvement Plan

Our implementation plan for this term focusses on teachers ensuring they are providing exemplars, rubrics and checklists for children to self-monitor and to start providing feedback to their peers based on the success criteria. Monday Week 5, our staff are visiting Trinity Gardens Primary School to observe a JP and Primary class with a focus on success criteria, feedback and goal setting. We also can observe a PLC in action. On Tuesday, we are visiting Westbourne Park Primary School, they were awarded the Public Education Excellence in Student Agency award last year. We are interested in learning how they plan and assess student learning when driven by students.

Milk Bottle Lids Donation

We are very excited to have created pink, yellow and blue pens from milk bottle lids. Please continue to donate lids and type 2 plastics to the school. We are getting low on lids so would love your donation so we can make more pens and stop plastics from going into landfill.

Best wishes,
Lisa Masters

Diary Dates

May

Wed 22nd

National Simultaneous Storytime @ 11.30

Mon 27th

Student Free Day

Fri 31st

Biggest Morning Tea



Please Note

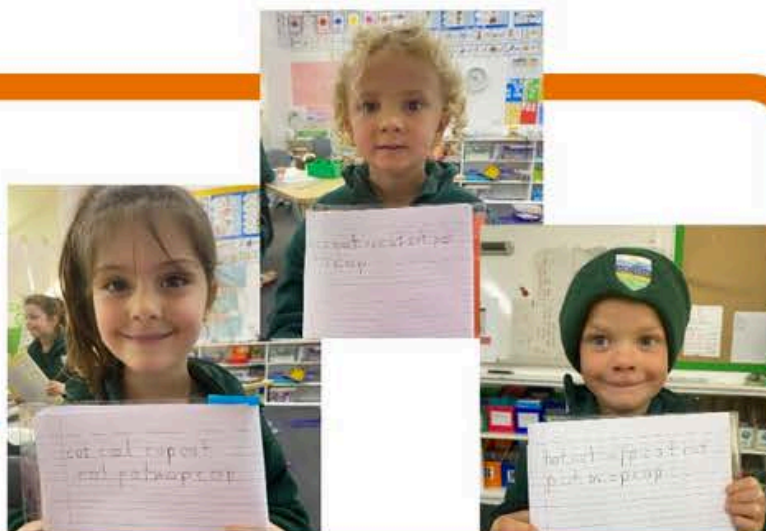
For non-urgent phone calls and community services it would be appreciated if you could ring or visit after 11.00am as we are busy with student learning in the morning and can't always get to the phone.
Thank you for our understanding



Junior Primary Learning

Miss Sly's Class

Reception students have been practicing writing with the sounds that they have learnt. They are continuing to practice their handwriting, segmenting and blending!



In the yard we have been busy digging and building a fun park. We've spent lots of time digging and making big piles of sand! We've also been making sure the workers are fed cooking food in our kitchen.





Upper Primary News



Inquiry

During Inquiry we have been learning about different types of energy, in readiness to design our sustainable houses. We had a lot of fun investigating how energy transfers from one object to another. Students made their own energy transfer machines.

WELCOME Miss Tilly who is working in our room one day a week as part of her teacher training!

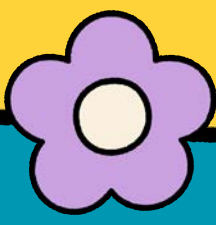


Your paragraph text

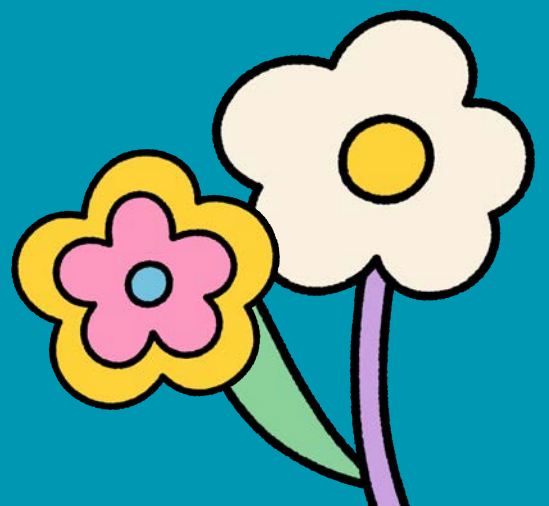
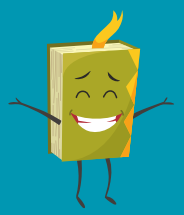


IN NUMERACY WE HAVE BEEN LEARNING ABOUT FRACTIONS. IN LITERACY WE ARE WRITING INFORMATION REPORTS.





our library is
magical



Port Neill Primary School

are hosting

Australia's

Biggest Morning Tea

Friday 31st May

@ 10.40-11.30

Please bring a plate to share

Gold coin donation

Everyone welcome



Student Free Day
Monday 27th May

School Beanies

\$22.00

With winter just around the corner we have nice warm beanies available for purchase.



Search School Student Broadband Initiative | Student Home Internet Program

Government of South Australia
Department for Education

Free home internet access for students

There are currently 2 options available

- wireless internet access from the Department for Education through the Student Home Internet Program
- NBN internet access until December 2025 from the Australian Government through the School Student Broadband Initiative



Scan to find out more

You might be eligible if you

- have a school aged child
- don't have reliable home internet access or have no active NBN connection

education.sa.gov.au/student-home-internet-program



Community

News

Save the Date

Port Neill Football Club
Golden Years
40th Anniversary
Reunion

Saturday July 27th

We would love to see past & present,
players, supporters & members to help
celebrate our 40 year anniversary of
'84, '86, '87 & '88 Premierships

Ports V CEU

@ Pt Neill Sporting Complex
players will be wearing heritage
guernseys

**which will be auctioned off on the
night**

Caleb Prime 0407232136

Julie Will 0427762063

or email

jwill26@me.com

MORE INFORMATION SOON!

Everyone welcome!



'84, '86, '87, '88

INFORMATION FOR CUSTOMERS

Australian Government Mobile Service Centre



Serving Regional Australia

Visit the Mobile Service Centre to find out about Australian Government payments and services for rural families, older Australians, students, job seekers, people with disability, carers, farmers and self-employed people.

Information about Department of Veterans' Affairs programs and support services for veterans and their families will also be available.

Staff can provide you with information and support. They can also help you create a myGov account. myGov is a simple and secure way to access government services online.

Wednesday, 5 June 2024

9 am to 4 pm

Opposite the Port Neill Hotel, Peake Terrace

PORT NEILL

For more information, go to servicesaustralia.gov.au/mobileoffice



servicesaustralia.gov.au/mobileoffice

CLEVE . SA

Running FESTIVAL

SUNDAY, 22ND SEPTEMBER 2024

HALF MARATHON

21.1KM

10KM

5KM

FOR MORE INFORMATION



www.cleverunningfestival.com

SURE THING AGENCY AND EASTERN EYRE BAPTIST FELLOWSHIP PRESENT

Colin Buchanan's

10,9,8...

GOD

is
GREAT

NATIONAL TOUR

THURSDAY JUNE 13

CLEVE, SA
CLEVE INSTITUTE

BUY TICKETS AT [COLINBUCHANAN.COM.AU](https://colinbuchanan.com.au)

WHAT DO I DO IF MY CHILD TESTS POSITIVE TO COVID?

If your child tests positive to COVID, they must stay home from school for at least 6 days. Day Zero being the day they tested positive. Therefore, they must stay home for a further 5 calendar days provided their acute symptoms have cleared. There is no need to keep testing, the initial test is sufficient.

Do not attend if still symptomatic. Any questions please phone the school.

