



Resilience Teamwork Kindness Respect

Hello everyone,

Welcome to Week 5! Yes, we are almost half way through term 1!

Governing Council

Our Governing Council met this week and held their AGM and first General Meeting for the year. Congratulations to:

Chairperson: Hannah Lienert

V/Chairperson: Abby Davey

Treasurer: Heather Dwyer

We are still seeking a Secretary for our Governing Council, if you are a parent and think this is a role you would consider taking on please contact me or Hannah Woolford for more information.

Many thanks to Judith Rehn for her 7 years of leading our Governing Council. Judith has definitely witnessed and been part of many school changes throughout her time on Governing Council. Many thanks also to Hannah Woolford for her two years of fulfilling the Secretary role. Our Governing Council would not be able to function without people in key positions and committee members so I am grateful to everyone who has made a commitment to Governing Council this year and I look forward to working with the committee.

Improvement Journey

We continue embedding learning intentions and success criteria into our learning. Teachers have set themselves areas of practice they would like to work on improving to ensure their implementation of learning intentions and success criteria have impact on students learning. Students are continuing their journey on self-monitoring and self-assessing their learning. One way families can help with our improvement journey is to ask children; what did you learn today? How did you self-assess your learning? Tell me about some of the success criteria in your learning today?

How is learning at PNPS different from learning at other schools?

This week I asked students from our R-2 Class "how do you think your learning at PNPS is different to learning at other schools?" Some of their responses are below:

We use a 100 wood chart, other schools probably just use paper

In Inquiry we are making rosemary salt.

We pick rosemary from the garden and dipped it in water and let it dry, and then we will use a dehydrator to dry it out and it will turn into salt.

We are learning about plants in Inquiry. There is a story about a boy who grew a forest.

We are learning about what can grow in different places like pineapple doesn't grow in SA but it does in Far North Queensland.

We self-report/assess our own learning (year 4 student)

We learn with and about our community in Community Connections

We are really lucky to have Sarah to learn about recycling plastics, I don't think any other school would have anyone who knows as much about plastics as Sarah does.

We have different learning because people learn different things at different times

We have different teachers and small amount of kids at our school

Sports Day

On Friday, we join Poonindie and Ungarra Primary Schools for our annual Sports Day. The day is being held at Ravendale Oval and commences at 9.00am. Many thanks to Hamish and the Poonindie team for organising and running the day.

Best wishes,

Lisa Masters

Dairy Dates

MARCH

Fri 1st – Poonindie Sports Day
Mon 11th – Adelaide Cup
Fri 29th – Good Friday

APRIL

Mon – 1st – Easter Monday
Fri – 5th – Beach Sports Day



UPPER PRIMARY CLASS

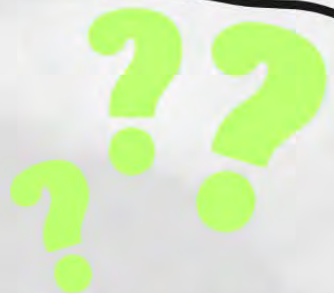
WHAT'S BEEN HAPPENING?

We have been very busy in the Upper Primary class.

Students have been learning about different language features, including similes, ready to begin their descriptive writing task. We have also been learning how to follow the writing process.

During Inquiry students have been investigating what infrastructure is, and the different zoning areas of council areas.

In maths, students have been learning about the Number System including ordering, recognising and representing numbers.



Junior Primary Inquiry Learning



In our inquiry learning we have been investigating the resources that we have here at PNPS, we have harvested the rosemary that was growing in the garden, cleaned it, dried it and crushed it. Keep watching this space to find out the final results!



Lani's

UPDATE

RELISH

PNPS staff and some of the parents and community members have started learning about the RELISH Model with Shelley Wild and her team from People HQ.

The purpose for learning this information is to create a community that can support our students/children to become the best learners they can be. With a fast changing world, our students/children need to be adaptable and equipped to face anything that is thrown in their direction.

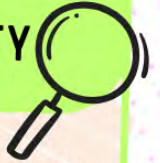
The first part of the RELISH model is about 'Relatedness' which talks about being able to belong within a tribe, team or group. From our earliest ancestors, humans have evolved to be part of groups - to ensure our survival. The ones that survived were those that could work with the tribe. Neuroscientists have discovered our brains are hard wired to keep us within social groups and wired to raise an alarm for the possibility of social exclusion.

Staff, parents and community members will be working together to see how we can ensure PNPS can create and maintain relatedness and make sure everyone feels a sense of safety and belonging within our group.

If anyone is interested in learning more or has any questions or concerns about the RELISH model, please feel free to get in contact.



CHILDREN'S UNIVERSITY



I have sent a QR Code out via Class Dojo for people to register or re-register their child/children for the Children's University Passport Activities. This will cost \$5 per child and payments are to be made to PNPS. Registrations need to be completed by end of Term 1, 12th April 2024. I am yet to do any training and get my head around how this works but once I do, I will be more active in helping students achieve their goals.



Breakfast Club



My aim for Breakfast Club this term was to ask the students to decide what we would make and help serve/prepare the food. So far I think it has been successful. Originally everyone wanted to make pancakes until I showed them some more creative ideas.

The most interesting breakfast so far was definitely the cereal ice pops chosen by Tex. I'm not sure we'll see them on the menu again. Gypsy showed great dedication in getting to school at 8:15am to help cook eggs produced by the school chickens.

Thank you to some families that have donated some food items when asked. It has definitely been helpful.

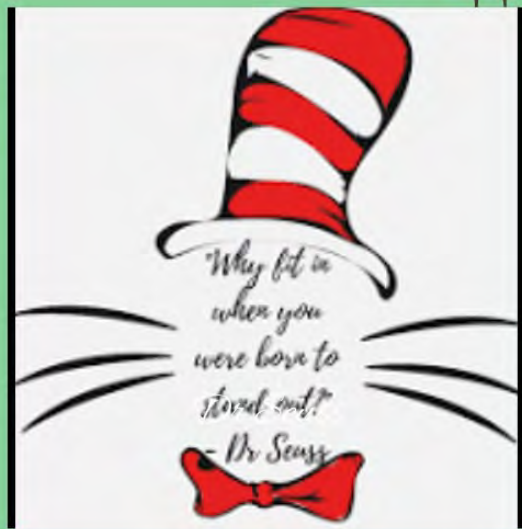
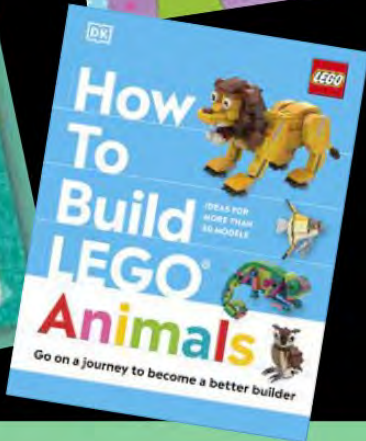
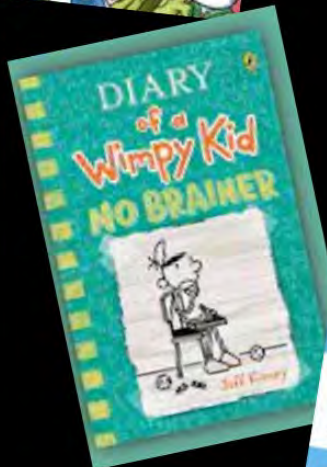
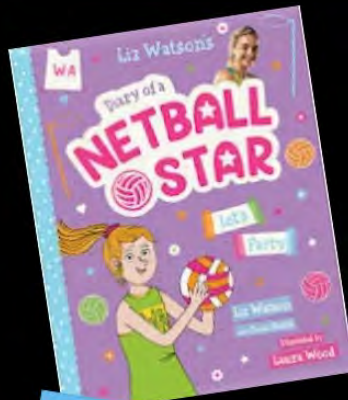
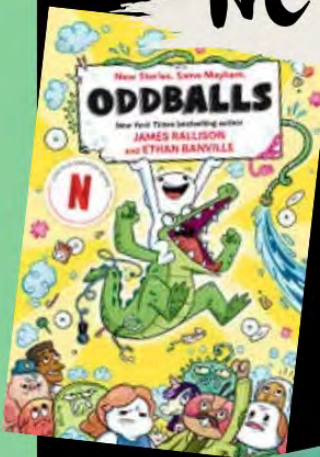


NEWSLETTER

SCHOOL LIBRARY



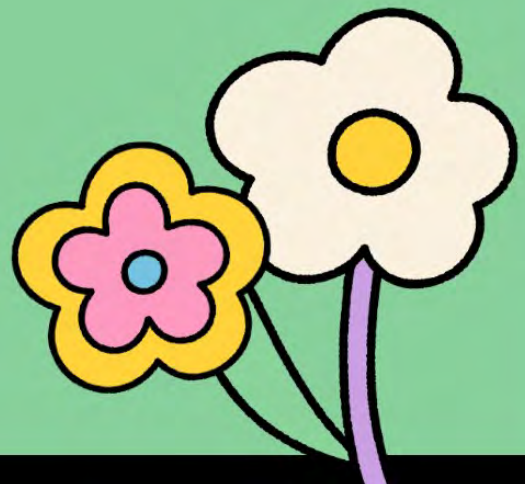
New books



MRS FULLBROOK'S CLASS



Library Day
is every Wednesday



MEET YOUR AUTISM INCLUSION TEACHER!

My name is Olivia and I am the Autism Inclusion Teacher (AIT) at Port Neill Primary School.



Miss Olivia Sly

I have one day (per fortnight or half a day a week) in my AIT role to focus on strengthening our school community's inclusion of students on the autism spectrum.

The Department for Education provides an Autism Inclusion Multidisciplinary (AIM) team to support me in the AIT role. The team includes, senior advisor educators, developmental educator, psychologist, occupational therapist, speech pathologist and an Aboriginal cultural project officer. The information from the AIM team is evidence-based and informed by the autistic and autism community.

My role as an AIT is to pass on information, resources and training I receive from the AIM team to my colleagues. This is my second year in the role and i am continuing to develop my skills and knowledge. Please feel free to contact me at olivia.sly427@schools.sa.edu.au and I would be happy to talk with you about my role.

Kind Regards,
Olivia Sly

PORT LINCOLN SOCCER ASSOCIATION
PRESENTS

COME & TRY DAY

**NEW PLAYERS & FAMILIES
WELCOME!**

**SUNDAY
17 MARCH**

**4-6 YEAR OLD
9:30 - 10:30**

**7-9 YEAR OLD
11:00 - 12:00**

**10+ YEAR OLD
WHO HAVE
NEVER PLAYED
ARE WELCOME
AT 11:00!**

MUST HAVE

- ✓ Parent/adult present
- ✓ Boots or sneakers
- ✓ Water Bottle
- ✓ Sunscreen

VENUE

 Kirton Point Oval
Matthew Place
Port Lincoln

**For further information
contact
Richard 0456 733 330**

**2024 Season
commencing
Sunday 12th May**

portlincolnsoccerassociation@hotmail.com

**Ports Football &
Netball Club Present**

FAMILY FUN DAY

Join us on Sunday the 17th of March for a day filled with fun, training, BBQ lunch, Uniform try ons an more!

WHEN: 17/03/2024 10:30am for Training and 12:00pm for a BBQ lunch.

WHERE: Port Neill Green Shed/Under the Pines

Please bring a Salad or Sweet to share, bathers & towels, a chair or picnic rug.



★ FAMILY FUN DAY - SUNDAY MARCH 17